

Pipe Hangers

STEEL PIPE CLAMPS & CLEVIS



FIGURE 260
Adjustable Clevis Hanger
Size Range: 1/2" - 30"



FIGURE 300
Adjustable Clevis Hanger
for Insulated Lines
Size Range: 3/4" - 12"



FIGURE 261
Extension or Riser Clamp
Size Range: 3/4" - 24"



FIGURE 40
Riser Clamp Standard
Size Range: 2" - 24"



FIGURE 100
Extended Pipe Clamp
Size Range: 1/2" - 8"



FIGURE 212
Medium Pipe Clamp
Size Range: 1/2" - 30"



FIGURE 216
Heavy Pipe Clamp
Size Range: 3" - 42"



FIGURE 295
Double Bolt Pipe Clamp
Size Range: 2" - 24"

STRUCTURAL ATTACHMENTS & BEAM CLAMPS



FIGURE 55 & 55L
Structural Welding Lug
Sizes (55): 1/2" - 3-3/4"
Sizes (55L): 1/2" - 2"



FIGURE 66
Welding Beam Attachment
Size Range: 3/8" - 3-1/2"

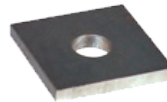


FIGURE 60
Steel Washer Plate
Size Range: 3/8" - 3-3/4"



FIGURE 133
Std. Duty Beam Clamp
Size Range: 4" - 12"

HANGER RODS & ATTACHMENTS



FIGURE 146
Continuous Thread Rod
Size Range: 1/4" - 1-1/2"



FIGURE 290
Weldless Eye Nut
Size Range: 3/8" - 2-1/2"



FIGURE 299
Forged Steel Clevis
Size Range: 3/8" - 3-3/4"



FIGURE 230
Turnbuckle
Size Range: 3/8" - 2-1/2"